



Minconsult

MALAYSIAN ENGINEERS BOLEH

Presented by:

**IR. BENEDICT INDARAN
VICE-PRESIDENT,
MINCONSULT SDN BHD**



1 & 2 October 2024
Menara Felda, Platinum Park KLCC

CONTENT



□ Global Reach of Minconsult

□ Enhancing Value of Engineering Services

□ Way forward



MINCONSULT INTERNATIONAL EXPERIENCE



GLOBAL RECOGNITION



**28 COUNTRIES AND
FIVE (5) CONTINENTS**

GLOBAL RECOGNITION



**NO. 1 TOP PERFORMING
CONSULTANT IN ASEAN FOR
ASIAN DEVELOPMENT BANK
(ADB)**



GLOBAL RECOGNITION

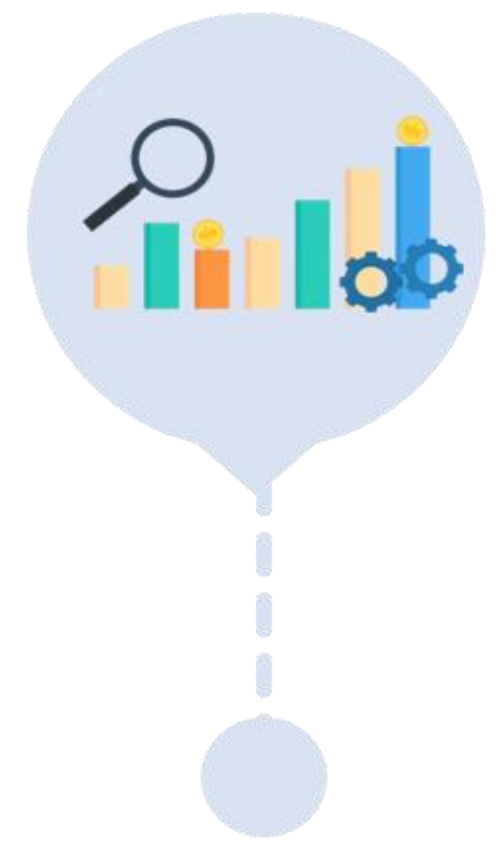


UNOPS

**RANKED 2ND HIGHEST IN THE
WORLD AND TOP IN ASIA FOR
THE UNITED NATIONS OFFICE
FOR PROJECT SERVICES**



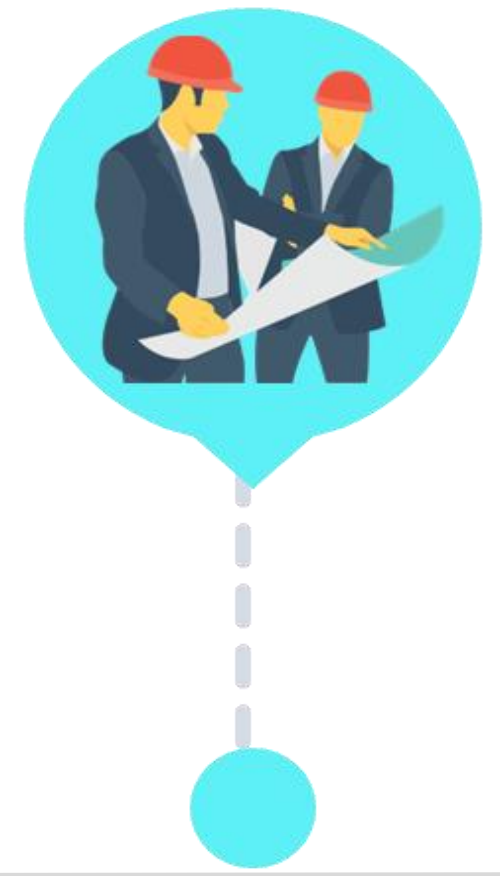
DIVERSE SCOPE



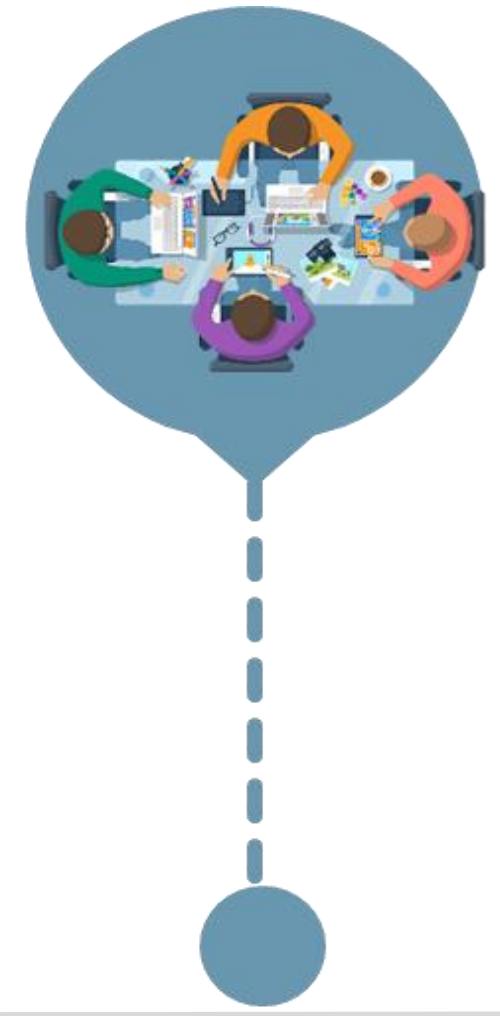
**FEASIBILITY
STUDIES**



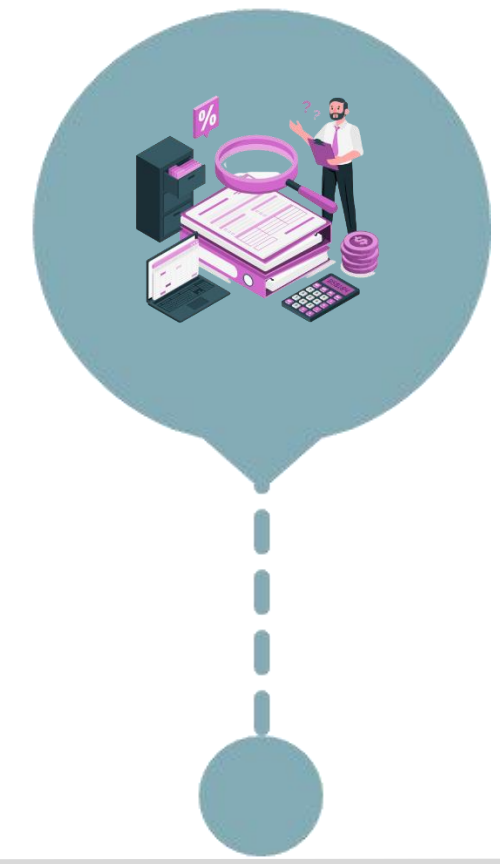
**DETAILED
DESIGN**



**CONSTRUCTION
SUPERVISION**



**PROJECT
MANAGEMENT**



AUDIT



DIVERSE SECTORS



POWER PLANT



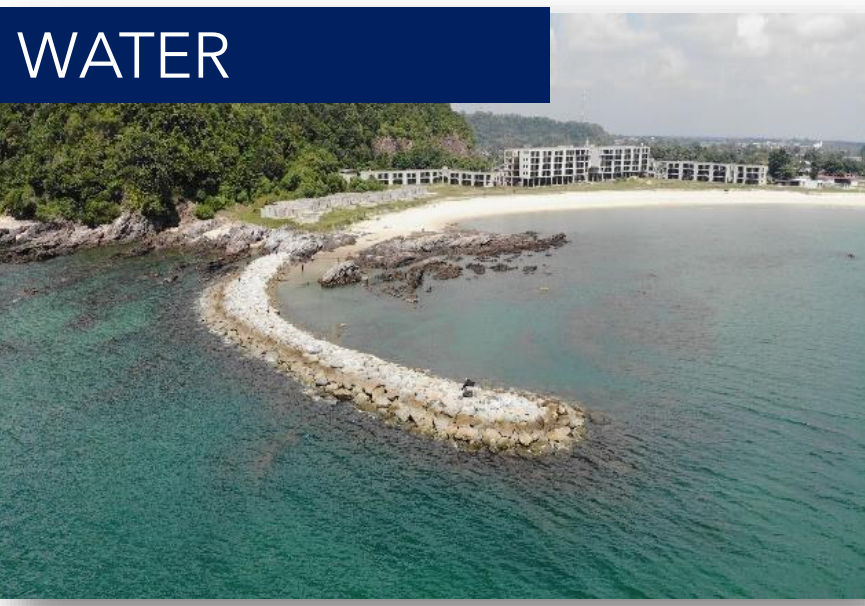
HIGHWAY



SEWERAGE



WATER



TRANSMISSION LINE



PORT



AIRPORT



INTERNATIONAL PIONEERING SPIRIT



**PHNOM PENH TO
SIHANOUKVILLE EXPRESSWAY
PROJECT - 1ST EXPRESSWAY
AND HIGHWAY CONCESSION IN
CAMBODIA**



INTERNATIONAL PIONEERING SPIRIT



**TUTONG - 1ST COMBINED CYCLE
POWER PLANT
IN BRUNEI**

INTERNATIONAL PIONEERING SPIRIT



**ENGINEERING OVER 1,000KM
ROAD PROJECTS IN PAKISTAN**



INTERNATIONAL PIONEERING SPIRIT



**COMMISSIONED 2580MW -
12% OF POWER GENERATION
CAPACITY IN BANGLADESH**

INTERNATIONAL PIONEERING SPIRIT

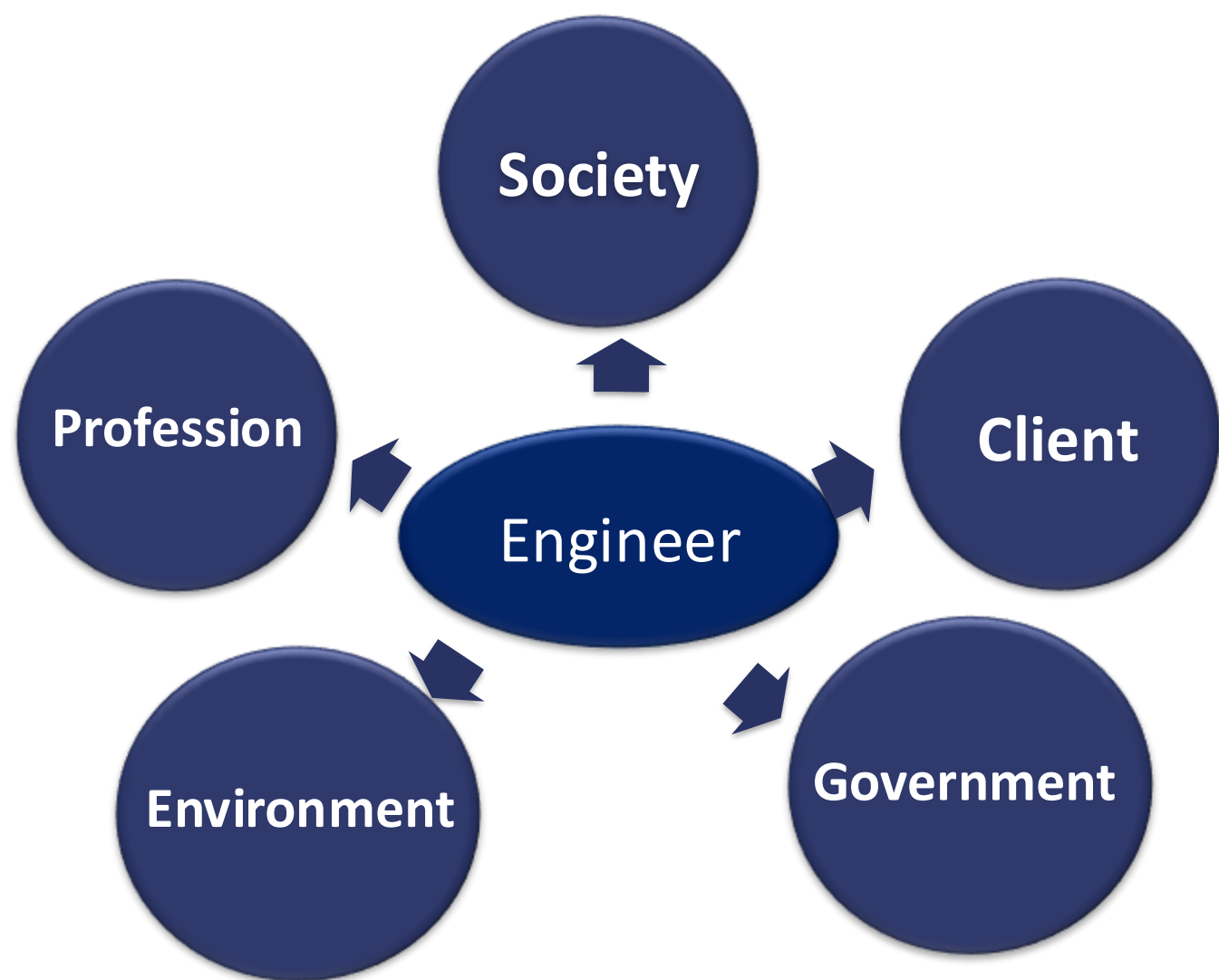


**SYSTEM INDEPENDENT CHECKING
ENGINEER(ICE)- JAKARTA LRT
PROJECT - CORRIDOR 1 (PHASE 1)
KELAPA GADING - VELODROME -
PACKAGE P102**

MORE THAN PREVENTION OF CORRUPT PRACTICES

Engineers Have A Pivotal Role In Civil Society and Have A Greater Responsibility

Engineer's Governance Framework



MINCONSULT'S COMMITMENT TO GOVERNANCE



2008

First ASEAN Engineering Consultancy to Sign MOU with Transparency International

2011

Corporate Integrity Pledge

2018

Corruption Free Pledge

2019

IT Policy

2020

- I. **Gift & Entertainment Policy**
- II. **Whistleblowing Policy**
- III. **Integrity Policy & Code of Conduct**

ENHANCING VALUE - FOCUS ON SUSTAINABILITY

GOOD BUSINESS DOING GOOD



Science Based Target Initiative (SBTI) - Climate Change Pledge 2022.

The first company in the construction sector in the ASEAN region.

This commitment to reduce our carbon footprint includes the following strategies and categories:



MINCONSULT SUSTAINABLE PROJECTS



The company adopts sustainable practices through **Minconsult Sustainability Tool (MiST)**



Kuching Urban Transportation System (KUTS)

World's first hydrogen-powered autonomous rapid transit



Kg Valdor Animal Waste Biogas Plant

Largest Animal Waste Treatment Plant in Peninsular Malaysia



Petronas New Leadership Campus

One of the Lowest BEI Buildings in the Country - LEED & GBI Platinum Rating



5.28 MWp Solar PV Project at MASKargo KLIA

Largest Retrofit PV Rooftop Project on Commissioning



ENHANCING VALUE - COMMITMENT TO HUMAN RIGHTS



UN Declaration
Of Human Rights



Valuing diversity
and inclusion



Creating an environment
free from discrimination
and harassment

CONSIDERATION WHEN GOING OVERSEAS

- ✓ Reasons For Undertaking Overseas Assignments
- ✓ Understand The Target Market
- ✓ Familiar with statutory requirements
- ✓ Understand The Project requirements
- ✓ Establishing Local Partners / Relationships
- ✓ Willingness Of The Staff To Go Overseas
- ✓ Risk analysis



WAY FORWARD

DEVELOP CONSTRUCTION PROFESSIONAL SERVICES MASTER PLAN (CPSMP)



- **Vision and Mission**
- **Strategic plans**
- **Realistic KPIs**
- **Compile statistics.**
- **Identify the capacity and competitiveness of service providers to meet the challenges in exporting their services.**
- **Develop strategies for export of services.**



WAY FORWARD

ENHANCE SCOPE AND EFFECTIVENESS OF MARTRADE'S GRANTS

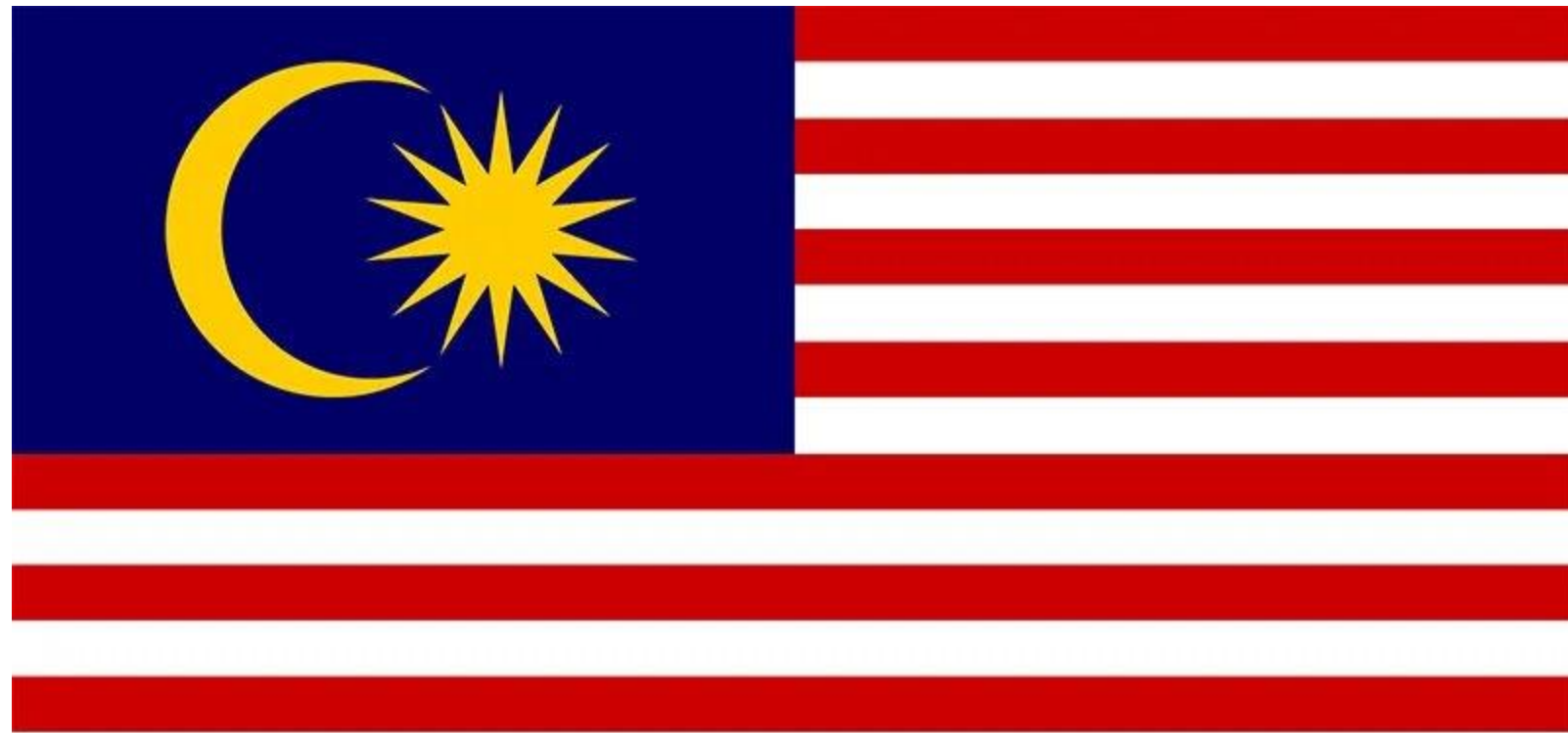
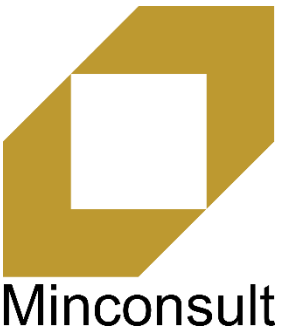


Activity	Suggestion
Activity 2: Travelling expenses to international destinations	To consider extending until 60 days
Activity 5: Conducting a feasibility study	Reinstate
Activity 6: Initial costs for first 12 months	To relook at the criteria of registered premise



WAY FORWARD

OTHER INITIATIVES



- ✓ Enhance Malaysia Inc. Concept
- ✓ Facilitate International Funding requirements for Construction Sector
- ✓ Strengthen and promote fiscal incentives for construction sector
- ✓ Increase preparedness for impacts of multilateral agreements
- ✓ Human Capital - mitigate PUSH elements and encourage PULL elements.



WE LEARN BY SHARING

THANK YOU



"Committed To Engineering Excellence"

BOARD OF ENGINEERS MALAYSIA

Tingkat 11 & 17, Blok F Ibu Pejabat JKR
Jalan Sultan Salahuddin, 50580 Kuala Lumpur
<http://www.bem.org.my>
enquiry@bem.org.my or complaint@bem.org.my.
Tel: 03-26912090; Fax: 03-26925017